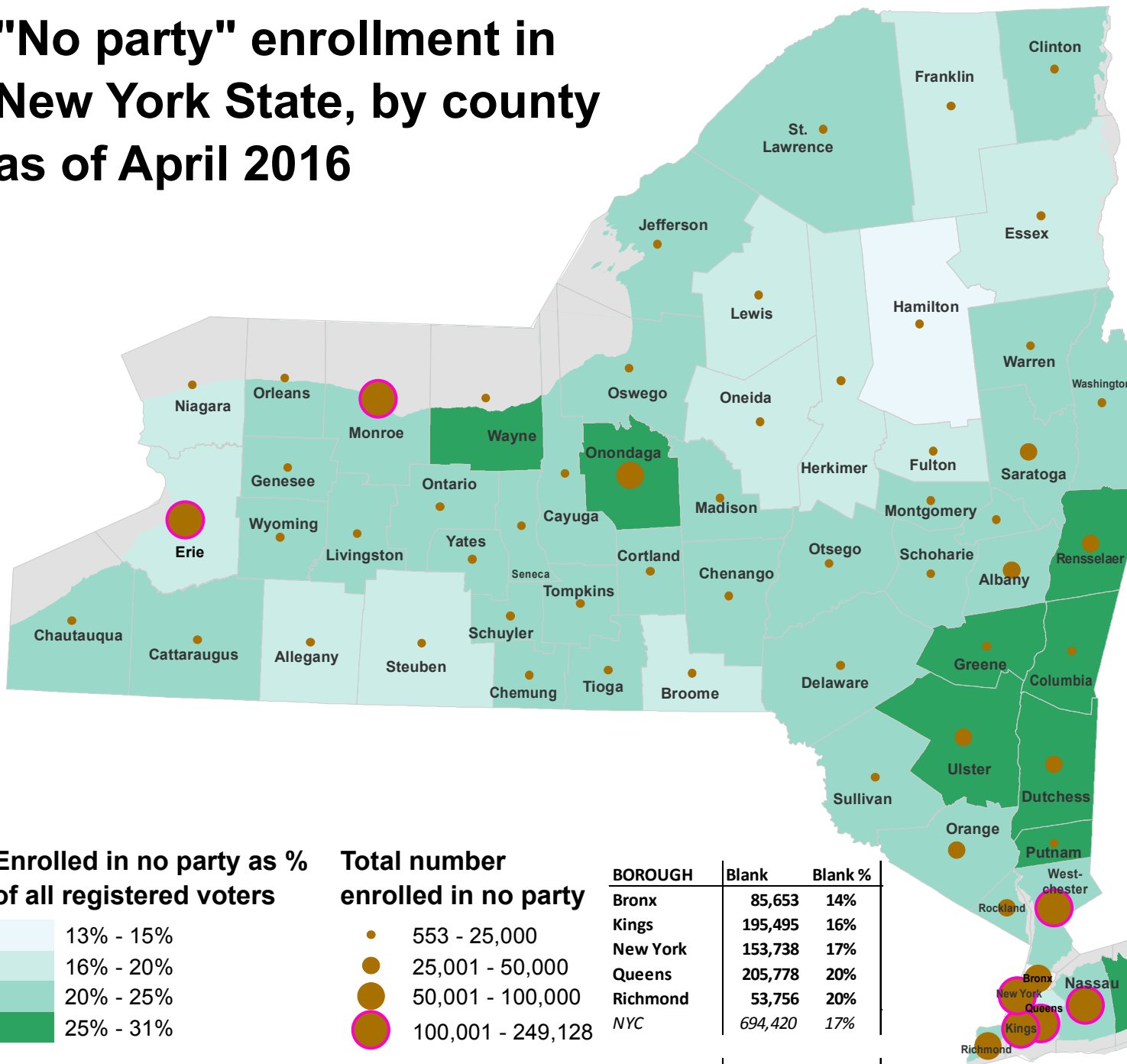
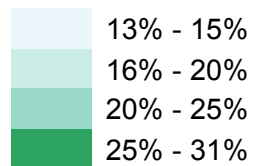


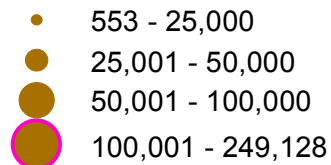
"No party" enrollment in New York State, by county as of April 2016



Enrolled in no party as % of all registered voters



Total number enrolled in no party



BOROUGH	Blank	Blank %
Bronx	85,653	14%
Kings	195,495	16%
New York	153,738	17%
Queens	205,778	20%
Richmond	53,756	20%
NYC	694,420	17%

COUNTY	Blank	Blank %
Nassau	222,479	23%
Suffolk	249,128	27%
Long Island	471,607	25%

COUNTY	BLANK	BLANK %
Albany	39,172	22%
Allegany	4,509	18%
Broome	20,997	19%
Cattaraugus	8,884	20%
Cayuga	9,517	21%
Chautauqua	17,932	24%
Chemung	10,110	20%
Chenango	6,335	22%
Clinton	10,670	23%
Columbia	10,724	27%
Cortland	6,371	24%
Delaware	5,281	20%
Dutchess	47,061	27%
Erie	100,809	18%
Essex	4,395	19%
Franklin	4,662	19%
Fulton	5,796	18%
Genesee	8,087	23%
Greene	7,394	26%
Hamilton	553	13%
Herkimer	6,311	17%
Jefferson	11,510	22%
Lewis	2,715	16%
Livingston	8,128	22%
Madison	9,268	23%
Monroe	104,017	24%
Montgomery	6,142	23%
Niagara	22,874	18%
Oneida	23,593	19%
Onondaga	69,380	26%
Ontario	16,068	24%
Orange	47,815	23%
Orleans	4,806	22%
Oswego	14,213	21%
Otsego	7,081	21%
Putnam	15,419	26%
Rensselaer	28,303	30%
Rockland	41,943	23%
Saratoga	35,325	24%
Schenectady	21,935	25%
Schoharie	4,232	24%
Schuyler	2,550	22%
Seneca	3,974	21%
St. Lawrence	11,743	20%
Steuben	9,874	18%
Sullivan	10,933	25%
Tioga	6,196	21%
Tompkins	10,730	21%
Ulster	33,550	30%
Warren	8,280	20%
Washington	7,321	22%
Wayne	13,502	25%
Westchester	129,709	23%
Wyoming	5,032	22%
Yates	2,666	20%
Upstate	1,086,397	22%

Source: NYS Board of Elections, as analyzed by the Center for Urban Research, CUNY Graduate Center